



PLC γ 2 (phospho Tyr1217) Polyclonal Antibody

Catalog No	YP-Ab-02422
Isotype	IgG
Reactivity	Human;Mouse;Rat
Applications	WB;IHC;IF;ELISA
Gene Name	PLCG2
Protein Name	1-phosphatidylinositol 4,5-bisphosphate phosphodiesterase gamma-2
Immunogen	The antiserum was produced against synthesized peptide derived from human PLCG2 around the phosphorylation site of Tyr1217. AA range:1186-1235
Specificity	Phospho-PLC γ 2 (Y1217) Polyclonal Antibody detects endogenous levels of PLC γ 2 protein only when phosphorylated at Y1217.
Formulation	Liquid in PBS containing 50% glycerol, 0.5% BSA and 0.02% sodium azide.
Source	Polyclonal, Rabbit,IgG
Purification	The antibody was affinity-purified from rabbit antiserum by affinity-chromatography using epitope-specific immunogen.
Dilution	Western Blot: 1/500 - 1/2000. Immunohistochemistry: 1/100 - 1/300. Immunofluorescence: 1/200 - 1/1000. ELISA: 1/5000. Not yet tested in other applications.
Concentration	1 mg/ml
Purity	\geq 90%
Storage Stability	-20°C/1 year
Synonyms	PLCG2; 1-phosphatidylinositol 4; 5-bisphosphate phosphodiesterase gamma-2; Phosphoinositide phospholipase C-gamma-2; Phospholipase C-IV; PLC-IV; Phospholipase C-gamma-2; PLC-gamma-2
Observed Band	148kD
Cell Pathway	intracellular,cytosol,plasma membrane,extracellular exosome,
Tissue Specificity	Lymph,Lymphoblast,Spleen,T-cell,
Function	catalytic activity:1-phosphatidyl-1D-myo-inositol 4,5-bisphosphate + H(2)O = 1D-myo-inositol 1,4,5-trisphosphate + diacylglycerol.,cofactor:Calcium.,function:The production of the second messenger molecules diacylglycerol (DAG) and inositol 1,4,5-trisphosphate (IP3) is mediated by activated phosphatidylinositol-specific phospholipase C enzymes. It is a crucial enzyme in transmembrane signaling.,PTM:Phosphorylated on tyrosine residues; upon ligand-induced activation of a variety of growth factor receptors and immune system receptors. Increases phospholipase activity.,similarity:Contains 1 C2 domain.,similarity:Contains 1 PH domain.,similarity:Contains 1 PI-PLC X-box domain.,similarity:Contains 1 PI-PLC Y-box domain.,similarity:Contains 1 SH3 domain.,similarity:Contains 2 SH2



domains.,

Background

The protein encoded by this gene is a transmembrane signaling enzyme that catalyzes the conversion of 1-phosphatidyl-1D-myo-inositol 4,5-bisphosphate to 1D-myo-inositol 1,4,5-trisphosphate (IP3) and diacylglycerol (DAG) using calcium as a cofactor. IP3 and DAG are second messenger molecules important for transmitting signals from growth factor receptors and immune system receptors across the cell membrane. Mutations in this gene have been found in autoinflammation, antibody deficiency, and immune dysregulation syndrome and familial cold autoinflammatory syndrome 3. [provided by RefSeq, Mar 2014],

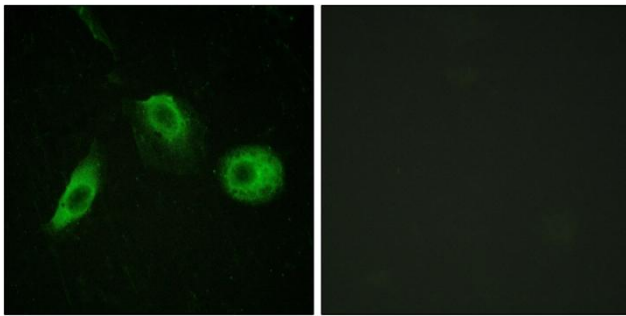
matters needing attention

Avoid repeated freezing and thawing!

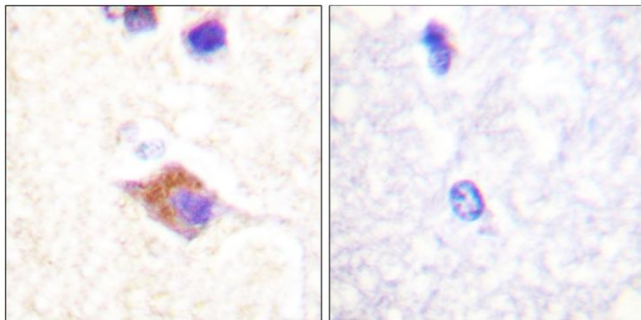
Usage suggestions

This product can be used in immunological reaction related experiments. For more information, please consult technical personnel.

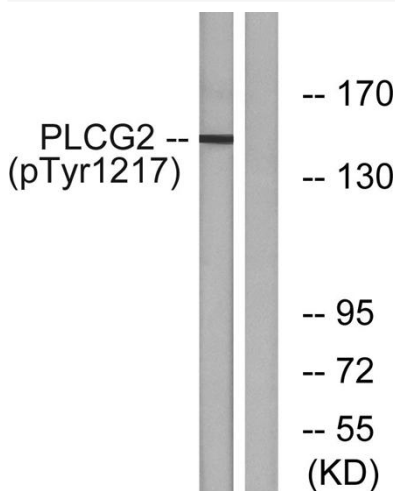
Products Images



Immunofluorescence analysis of HeLa cells, using PLCG2 (Phospho-Tyr1217) Antibody. The picture on the right is blocked with the phospho peptide.



Immunohistochemistry analysis of paraffin-embedded human brain, using PLCG2 (Phospho-Tyr1217) Antibody. The picture on the right is blocked with the phospho peptide.



Western blot analysis of lysates from Jurkat cells treated with UV 15', using PLCG2 (Phospho-Tyr1217) Antibody. The lane on the right is blocked with the phospho peptide.